

Culture & Regeneration: SUPPORTING LOCAL BUSINESSES

Support For Our High Streets & Businesses

- Safer Reopening of the High Street Fund
- Business Grants
- Improved Comms
- Business Support Task
- Economic Development Strategy
- Digital Infrastructure Strategy
- New Business Lounge – Start Up Bromley



Funding Bids

- **Cultural Recovery Fund (Churchill Theatre £435k)**
- **Reopening of the High Streets Safely Fund for £295k**
- **Welcome Back Fund for a further £295k.**
- **A funding application has been submitted to the High Streets For All fund.**

Discretionary Grants

The Government has made available a variety of support packages for business during the COVID-19 pandemic.

One of these support packages Additional Restrictions Grant (ARG) that allows Councils to support local businesses.

To date, Bromley has been awarded a total of £9,598,878.

As at 15 June Grants had been distributed owing ways:

- ARG Hardship Scheme (closing date 20th June 2021) - £3.5m has been distributed to 313 businesses
- ARG Home-based Scheme (closing date 20th June) - £56k has been distributed to 28 businesses, with circa. 60 applications being processed.
- ARG Independent Pubs, Bars and Licensed Sports and Social Clubs - £772,000 distributed to 67 venues.
- ARG Innovation Grant £890,000 distributed to 94 businesses
- ARG Tier 4 Top Up Scheme - £1.9million distributed to 2286 businesses
- ARG Cultural Recovery and Community Swimming £120,000 has currently been paid to the Borough's Cultural venues and Community Swimming
- ARG Special Treatment Licence and Pavement Licence £45,000 has currently been paid to 45 businesses

Currently, almost 80% of the fund has been distributed with a 31 July deadline to distribute 100%

Mandatory Grants

Grant Scheme	Number of Business Grants Paid	Amount Paid (£)	Notes
Local Restrictions Support Grant - (Closed) Addendum	1,561	2,805,862	This scheme has now closed, and final payments were made by 30th April 2021
Local Restrictions Support Grant - (Closed)	348	120,185	This scheme has now closed, and final payments were made by 30th April 2021
Local Restrictions Support Grant - (Sector)	5	3,857	This scheme has now closed, and final payments were made by 30th April 2021
Christmas Support Payment for wet-led pubs	55	55,000	This scheme has now closed, and final payments made by 31st March 2021
Local Restrictions Support Grant - (Closed) Addendum Tier 4	1,601	1,641,752	This scheme has now closed, and final payments were made by 30th April 2021
Closed Business Lockdown Payment	1,648	8,856,000	This scheme has now closed, and final payments were made by 30th April 2021
Local Restrictions Support Grant - (Closed) Addendum 5 Jan onwards	3,300	9,097,138	The end date for applications for the initial 42-day period is 31st March 2021 and for the 44-day period is 31st May 2021.
Restart Grants	1,256	10,750,721	End date for applications is 30 th June 2021
Total paid: Nov 2020 – 9th June 2021	9,774	33,330,515	



Culture & Regeneration: Economic Strategy

Alicia Munday

Interim Assistant Director
of Culture and Regeneration

Economic Development Strategy



Why do we need an Economic Strategy?

- Population is growing – is this financially sustainable?
- Are we ready for technology advancements?
- Changes in our local economy make up, e.g. retail?
- Are we developing the right skills and expertise for the future?
- Recovery



Core Purposes

- Opening up opportunities
- Promote growth
- Innovation, including sustainability
- Allocate resources
- Support Recovery



Aspiration: Education & Skills

‘our residents have access to the right opportunities for skills and education that will ensure healthy employment in the future



Aspiration: Employment Spaces

‘our residents have access to the right employment spaces in the right locations with strong networks which encourages enterprise and facilitates sustained growth ‘



Aspiration: Thriving & Investing

‘our borough is exciting,
attractive and a welcoming
place where businesses thrive,
people aspire to live and visit,
and new enterprises seek to
invest’



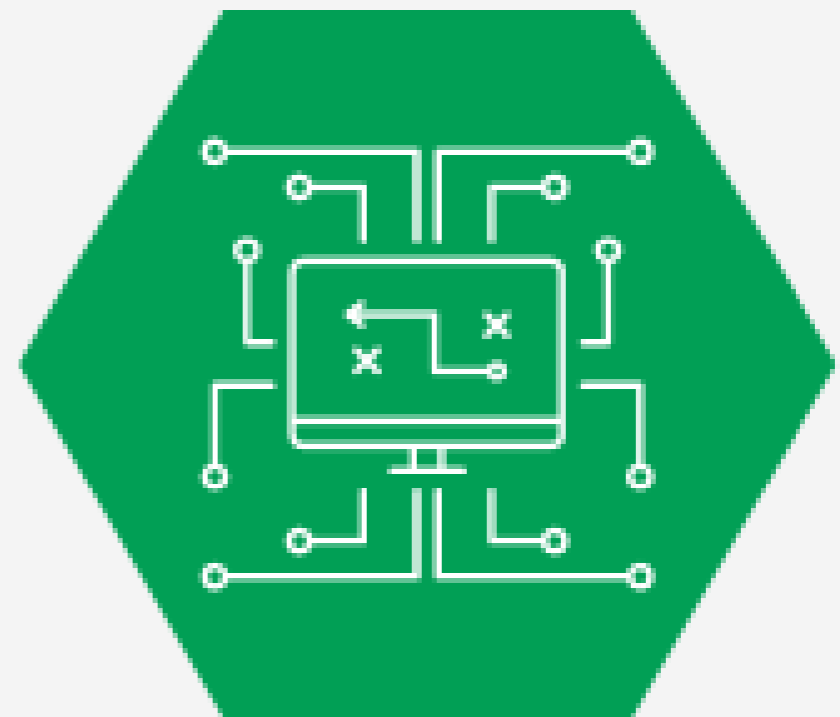
Aspiration: High Streets for the Future

‘our High Streets can adapt to the change need of consumer, continue to have strong offer, that includes places to live, work and entertain’



Aspiration: Connectivity & Mobility

‘our community is well connected through diverse physical and digital infrastructure networks which underpins mobility across the whole borough’



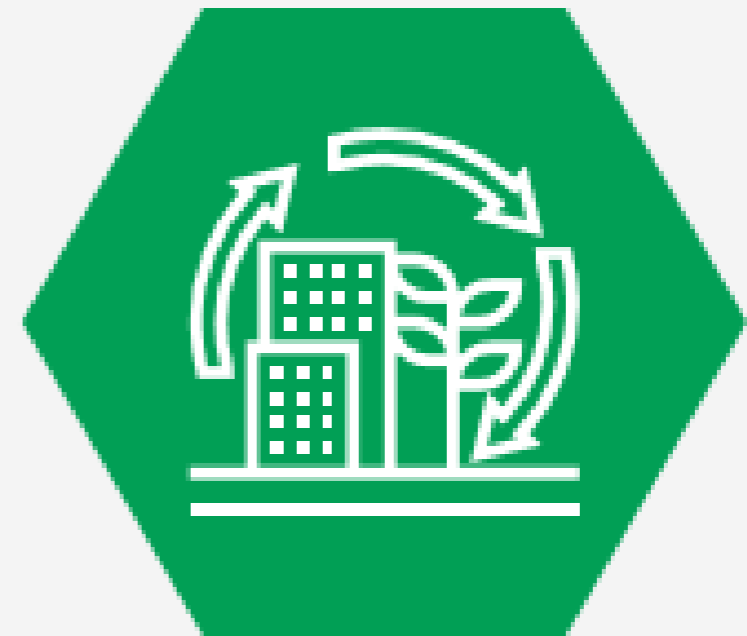
Aspiration: Promoting Tourism and Culture

‘our cultural and tourism industries continue to grow and diversify, and our unique historical features are promoted’



Aspiration: A Green Economy

‘we want to be promoting a
Green Economy, to help
deliver sustainably growth’





THE LONDON BOROUGH

www.bromley.gov.uk



London Borough of Bromley, Stockwell Close, Bromley, Kent, BR1 3UH



bromley@bromley.gov.uk



020 8123 4567



www.bromley.gov.uk

ENABLING BROMLEY'S
DIGITAL FUTURE



Bromley Digital Infrastructure

Connectivity in Bromley



Only **3.2% of premises in Bromley have access to full fibre broadband** currently. This puts our fibre connectivity at **318th place out of 380 boroughs based on % of premises connected.**



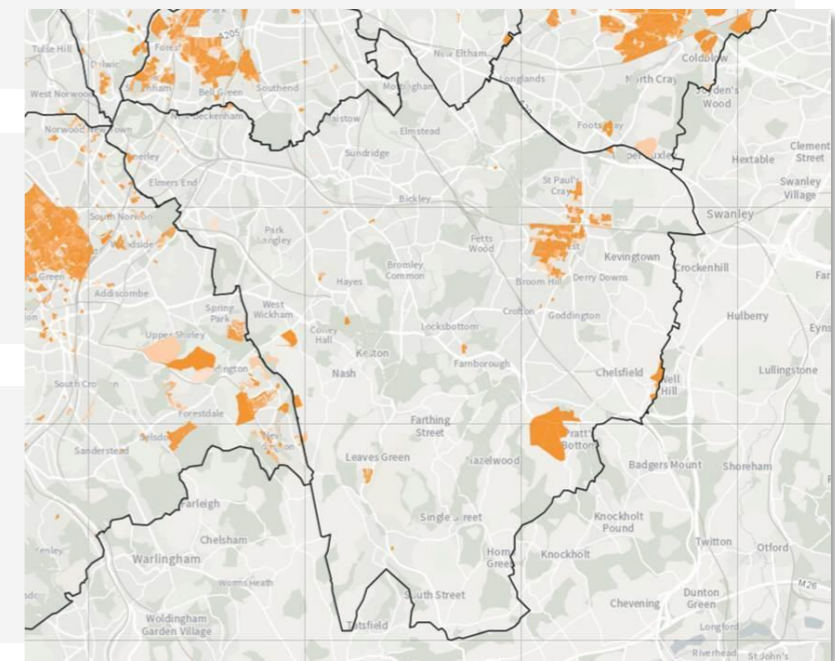
Mobile connectivity is poor in Bromley – rural areas suffer from poor coverage and the capacity is insufficient in more densely populated areas



As well as improving on poor existing connectivity **there is a need to adapt to ‘future proof’ connectivity** – mobile and broadband infrastructure that can support gigabit capable speed in line with rapidly increasing demand



Digital connectivity is linked to improving quality of life and supporting economic growth. If the borough is to continue to be a place that people choose to live, work, study and invest, the right digital infrastructure is essential.



Ofcom map showing availability of full fibre broadband in Bromley

Bromley Digital Infrastructure



Bromley Digital Infrastructure Toolkit - a document published online that sets out our terms, expectations and pricing for mobile operators who want to rent space on our street assets. Mobile operators spread their network coverage and capacity by setting up small cells on street assets.



Memorandum of Understanding (Openreach) - a document agreed to by Bromley Council and Openreach allowing Openreach faster deployment of their fibre broadband roll out plans. This will increase the speed of delivery of fibre connections in telephone exchange areas of Farnborough, Orpington, Biggin Hill and Chislehurst.

Bromley Digital Infrastructure

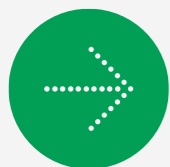
B r o m l e y D i g i t a l I n f r a s t r u c t u r e T o o l k i t



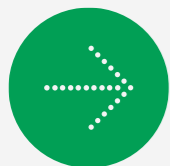
Mobile Operators rent space on council assets for their apparatus that boosts mobile network capacity – we have set up a toolkit that standardizes the engagement process with the Council.



Mobile Operators submit an Expression of Interest (EOI) as invited by the toolkit, with information such as their deployment plan, design and architecture information, pre-selected assets etc.



Once all information has been agreed to, **the operator and the Council will enter into an agreement** and the operator can begin deploying small cells



The toolkit went live in March and several operators have submitted EOIs. It is anticipated that the first small cells will be deployed in the borough this year.



Bromley Digital Infrastructure

W h a t a r e S m a l l c e l l s ?



Small cells are small shoe box size boxes that are located on lamp columns or other street assets.



Small cells have a target **coverage area of: 20,000 m²**. Therefore a roll out plan of 15 small cells, will create improved network capacity over an area of 300,000m²



Example of small cell

Bromley Digital Infrastructure

M e m o r a n d u m o f U n d e r s t a n d i n g - O p e n r e a c h



Openreach's Fibre First roll out is looking to make fibre broadband connections nationwide by 2025



Openreach have announced fibre roll out in 5 telephone exchanges in Bromley. The following locations have been announced - **Farnborough, Orpington, Biggin Hill and Chislehurst**



The Memorandum of Understanding (MoU) – provides benefits to Openreach to help speed up their roll out as well as provide assurances to the Council of best practice working, minimizing disruption etc.



The MoU was signed in March and Openreach have begun adopting the benefits provided to them by the Council



WHERE WE ARE now - Toolkit



The toolkit was published 12 March 2021. Currently in discussion with multiple Code Operators looking to deploy small cells in Bromley

WHERE WE ARE now - MOU



Current plans outlined by Openreach look to start work at the telephone exchange in Chislehurst within the next 3 months.

Bromley Digital Infrastructure Toolkit



F u r t h e r w o r k :
f i b r e d e v e l o p m e n t



Openreach looking to connect up 5 telephone exchanges still leaves **4 exchanges in the borough with no roll out plans for fibre**



Typically, **fibre broadband providers connect up new homes or retrofit existing homes** with fibre connections



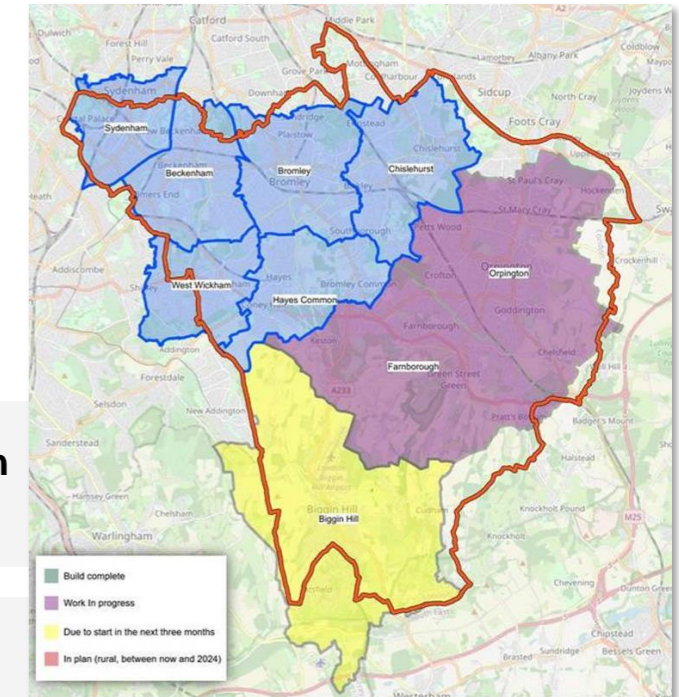
As we have no housing stock **we are looking to facilitate communication between the fibre providers and the housing associations** to get housing stock connected



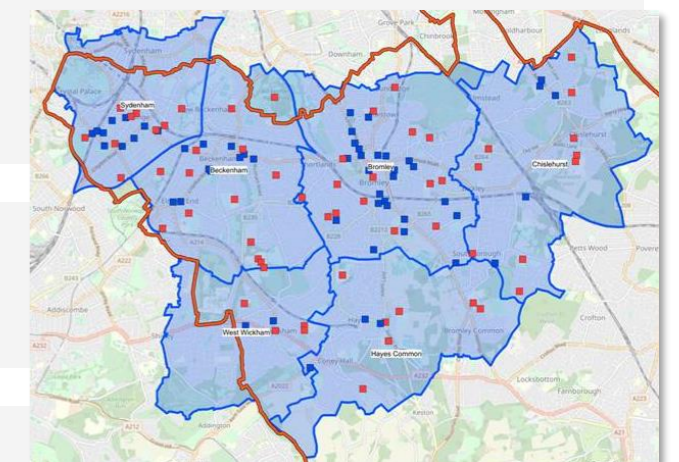
We will look to ensure all **new housing being brought forward by the Regeneration Team** are fully connected with full fibre broadband from day one.



If funding becomes available we are also looking to see how we could connect up council assets in these telephone exchange areas



Bromley telephone exchanges – Blue sites are not included in Openreach fibre roll

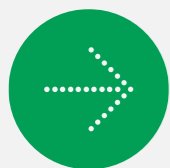


Schools and libraries (red pins), other council buildings (blue pins)

M o n i t o r i n g



Monitoring report to be submitted to RR&H PDS every 6 months. Initial date TBC.



It is anticipated that the monitoring report will include:

Mobile Coverage:

Key Indicator: % change in mobile coverage in Bromley

Other Lead Indicators: Plans for developments, new agreements with operators, rates of approval for apparatus.

Full Fibre Broadband

Key Indicator: % change in fibre broadband coverage in Bromley

Other Lead Indicators: update on telephone exchange announcements and progress; agreements with operators.

Other work streams and progress:

Facilitating conversations with providers and housing associations; including full fibre in new housing developments; communicating with planning policy within LBB